



EVOLVE

**A RUGGED HANDHELD LTE DEVICE BUILT
FOR ENTERPRISE AND PUBLIC SAFETY**



EVOLVE HANDHELD LTE DEVICE

Thanks to rapidly expanding choice of data networks, you now have more ways to connect with your business than ever before. But the communications landscape evolves quickly, and your needs are always changing. Keeping your fleet of user devices and in-field teams up to date and ready for the future is a challenge.

Built for business and mission critical environments, the Evolve LTE handheld device

combines intuitive user experience and open platform architecture with the ruggedness and reliability expected of a critical communications device.

Evolve enables seamless communications across different locations and networks. With Evolve, your teams will use the cutting edge technology of today and be ready for the innovations of tomorrow.





KEY FEATURES



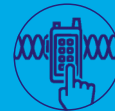
RESILIENT AND RUGGED

- Dustproof and submersible IP68 (2m, 2h)
- Liquid resistant glove operable touch screen
- Long life and easily replaceable battery
- Secure battery attachment



SEAMLESS CONNECTIVITY

- 3G, 4G, Dual band Wi-Fi
- Dual SIM capability
- Ideal companion for WAVE PTX™



MISSION-CRITICAL

- Dedicated MC controls (PTT, emergency, channel)
- Loud, clear audio
- Superior background noise cancellation
- MIL-STD-810 (11 categories exceeded)



OPEN ARCHITECTURE

- Android platform
- Open app ecosystem
- Centralised device management



INTUITIVE USER EXPERIENCE

- Simple interface
- 5" touch screen
- Front and rear facing cameras



RESILIENT AND RUGGED

Evolve is a ruggedised device for those hard at work. Built to withstand tough working conditions and to last multiple shifts, you can get the job done safely anywhere you do business.

BUILT FOR ANY ENVIRONMENT

Evolve was built tough, to operate reliably in any conditions that you do business. Completely dustproof and submersible in up to 2 metres of water for up to 2 hours and with a rugged 5" display with Gorilla Glass 3 screen, it is built to withstand repeated drops onto concrete and meets IP68 and MIL-810 standards. Evolve was built to perform on the job, with glove-operable, liquid-resistant touchscreen, physical programmable buttons and standard Android menu and navigation buttons.

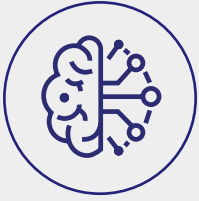
POWER FOR MULTIPLE SHIFTS

Evolve is equipped with high-capacity swappable batteries to ensure your device can stay in the field for as long as your team needs. Built for multi-shift use, Evolve has been designed to enable a long run time and can be handed over from shift-to-shift without charging.

SERVICES PACKAGES FOR OPERATIONAL CONTINUITY

	Included in new device purchase	Optional Service
Accidental Damage		
1-Way Shipping		
Hardware Repair <small>Normal wear & tear</small>		
Technical Support <small>Available during business hours 8am - 5pm, GMT +8 Monday - Friday</small>		
	3Y ESSENTIAL	3Y ESSENTIAL with Accidental Damage

** Batteries & Accessories are not covered



SEAMLESS CONNECTIVITY

Equipped with future-proofed data and voice connectivity, and access to an expanding technology and software ecosystem, Evolve is ready to grow alongside your business.

ADVANCED BROADBAND DATA

As your organisation's data needs and network capabilities expand, this device is ready for your transition to next-generation networks. Evolve supports 3G, 4G and Wi-Fi, so can adapt to your network configuration. Encrypted Bluetooth 5.0 provides additional future-proofing for connectivity to the next generation of third-party devices and accessories.

MOTOROLA SOLUTIONS TECHNOLOGY ECOSYSTEM

Connect into a limitless future of technology and software integrations with Motorola Solutions' growing technology and software solution set, including video security and analytics, location services, and productivity and incident management software. Thanks to its processing power, large display and rich data connectivity, your Evolve device will have you poised to deploy advanced technology as your needs grow, while its rugged design and outstanding voice capabilities ensure that you never compromise your most critical communications.

IDEAL DEVICE FOR MOTOROLA SOLUTIONS BROADBAND PUSH-TO-TALK SYSTEMS

Purpose built as the ideal companion for Motorola Solutions broadband push-to-talk systems including WAVE PTX, Evolve allows your teams to connect with greater speed and efficiency across different devices, networks and locations. Evolve has the familiar user controls of a two-way radio: dedicated emergency and push-to-talk buttons, easy talk group selections and centralised provisioning and configuration. When hardware, software and accessories work effortlessly together, the result is a device that works seamlessly for you.

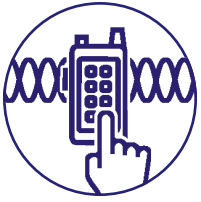


WAVE PTX

Connect your team with greater speed and efficiency using WAVE PTX, a push-to-talk service that has no boundaries.

WAVE PTX is a subscription-based group communication service that instantly connects your team across different devices, networks, and locations.





MISSION-CRITICAL

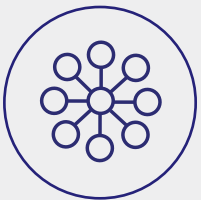
Wherever the mission takes you or whatever working conditions you face, you need a device that's as tough and durable as they come.

MADE FOR THE MISSION AHEAD

Designed for use in tough, unforgiving environments, Evolve meets MIL-STD-810 for drop and shock testing and is IP68 rated for protection against dust and water, so will keep working even after being submerged for up to two hours at a depth of two metres.

SUPERIOR AUDIO QUALITY

A truly business and mission-critical device, Evolve allows your team to hear and be heard in any environment you do business. The unmatched audio quality including three microphones for superior noise suppression and echo cancellation, carries through to a range of accessories, such as wireless full duplex remote speaker microphones that provide even quicker access to push-to-talk, or compact earpieces that let your team be discreet as they communicate.



OPEN ARCHITECTURE

Built with the familiar user experience of the Android operating system, Evolve is easily adaptable to your existing systems and allows for a seamless transition for anyone who has used an Android smartphone or tablet.

OPEN APP ECOSYSTEM

With its open app platform, your users can access any app in the Google Play Store, including G-suite apps such as Gmail and Google Maps, productivity apps such as Slack, Teams, and Dialpad, or even your own custom Android apps. A variety of mobile device management (MDM) platforms for Android give you full control over which apps get installed, helping you ensure maximum productivity and security.

ANDROID ENTERPRISE ENABLED

Designed for speed, flexibility and scalability with open architecture, Evolve leverages the Android platform and open application ecosystem. Evolve is enabled with Android Enterprise functionality to ensure that it can integrate with the existing mobile device management systems of your organisation.

CENTRALISED DEVICE MANAGEMENT

Program and update your fleet over 3G, 4G and Wi-Fi without taking your devices out of the field, and have more comprehensive fleet admin control by scheduling device updates for when it's best for your business.





INTUITIVE USER EXPERIENCE

Designed to give your team immediate access to the data and intelligence flowing in and out of your organisation, and help them to make informed decisions on the fly.

SIMPLE INTERFACE

Evolve combines the touchscreen interface of a smartphone with the physical buttons and controls of a two-way radio to give your team quick, easy, instant communications that let them keep their eyes on their work. This simple interface means Evolve delivers the intuitive voice communications your team relies on to work in any environment.

FULL MULTIMEDIA CAPABILITIES

Evolve's 5" touch screen is your users' window into the world of data-empowered insights and applications – allowing them to view videos, images, schematics, and diagrams from anywhere. Front- and rear-facing cameras allow you to capture and send images and video, and video chat.





ACCESSORIES

Optimise the Evolve LTE device with a suite of available accessories. With batteries, chargers, earpieces and holsters, you can expand and customise the functionality of Evolve, so you have the options you need to get the job done.



AUDIO SOLUTIONS



WM500 WIRELESS REMOTE SPEAKER MICROPHONE
PMMN4127



RM250 WIRED REMOTE SPEAKER MICROPHONE
PMMN4125



EARPIECE WITH LOUD AUDIO TRANSLUCENT TUBE
PMLN8191



EP910w WIRELESS EARPIECE WITH PTT BUTTON
PMLN8123



WP300 WIRELESS BLUETOOTH CONTROL POD
PMLN8298

CARRY SOLUTIONS



3" BELT CLIP
PMLN7965



2.5" BELT CLIP
NTN8266



PLASTIC CARRY HOLSTER WITH NO CLIP
PMLN6970

CHARGING SOLUTIONS



MULTI-UNIT CHARGER
PMPN4568



VEHICULAR POWER ADAPTER
PMPN4169

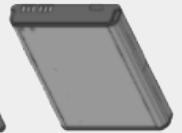


MICRO USB POWER ADAPTOR
PS000150A14

BATTERY OPTIONS



STANDARD 2900mAh LI-ION BATTERY
BT000592A01



HIGH CAPACITY 5800mAh LI-ION BATTERY*
BT000593A01

* Requires battery cover HKLN5002.

For more information about Evolve visit motorolasolutions.com/Evolve

Availability is subject to individual country law and regulations. All specifications shown are typical unless otherwise stated and are subject to change without notice.

MOTOROLA, MOTO, MOTOROLA SOLUTIONS and the Stylized M Logo are trademarks or registered trademarks of Motorola Trademark Holdings, LLC and are used under license. All other trademarks are the property of their respective owners. ©2021 Motorola Solutions, Inc. All rights reserved. (03-21)